

Worksheet Twenty-three (Fingerprint 10)

Examples from Bach Chorales

Example 1 (RM67, third phrase)



The musical score for Example 1 shows a cadence in the third phrase of a chorale. The key signature has one sharp (F#), and the time signature is 4/4. The melody in the treble clef consists of quarter notes: G4, A4, B4, C5, B4, A4, G4. The bass line in the bass clef consists of quarter notes: G3, A3, B3, C4, B3, A3, G3. The final chord is a G major triad (G, B, D) in the treble and a G major triad (G, B, D) in the bass, with a fermata over the final G in the treble.

a) chords e:

- Label the last four chords
- Discuss the use of inversions and the reason they are necessary in harmonising this cadence

Example 2 (RM10, second phrase)



The musical score for Example 2 shows a cadence in the second phrase of a chorale. The key signature has one sharp (F#), and the time signature is 4/4. The melody in the treble clef consists of quarter notes: G4, A4, B4, C5, B4, A4, G4. The bass line in the bass clef consists of quarter notes: G3, A3, B3, C4, B3, A3, G3. The final chord is a G major triad (G, B, D) in the treble and a G major triad (G, B, D) in the bass, with a fermata over the final G in the treble.

a) chords a:

- Label the last three chords
- Are there any more orthodox alternatives for just the last three chords (perhaps using a different key)

Example 3 (RM12, first phrase)

a) chords C:

- a) Label the final four chords
- b) What is unusual about the antepenultimate one? How might you justify this harmonisation?

Example 4 (RM80, third phrase)

a) chords D:

- a) Label the last five chords
- b) Describe in the inner voices in the last three chords.

Example 5 (RM127, final phrase)

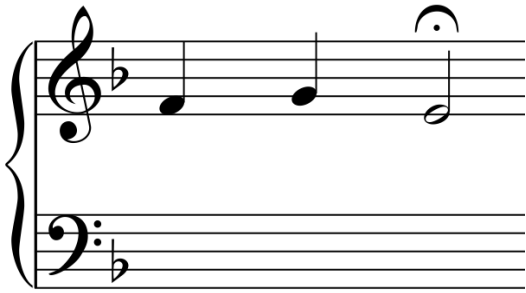


a) chords C:

- a) The final two chords could be analysed in two keys – work out which they are and label them in both keys.
- b) Label the harmonies of the last two chords
- c) What options are available in terms of what key this final cadence of the chorale seems to be in.

Exercises

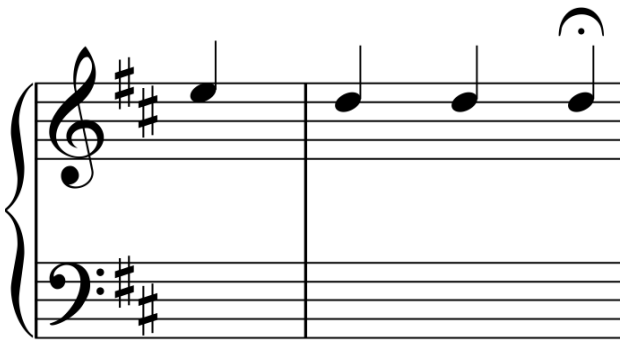
1



2



3



4

