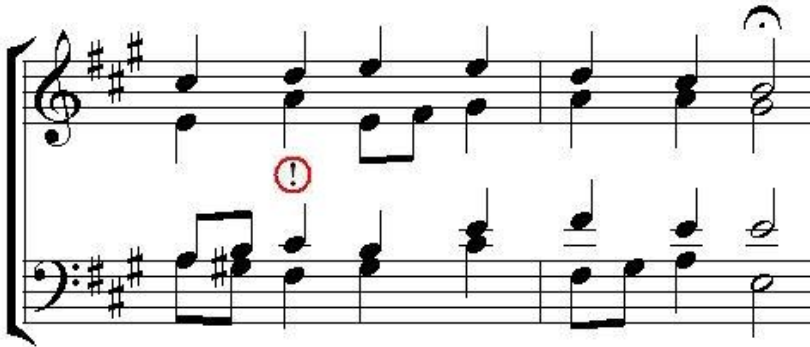


## Worksheet Seventeen (Fingerprint 6)

### Examples from Bach Chorales

#### Example 1 (RM233, first phrase)

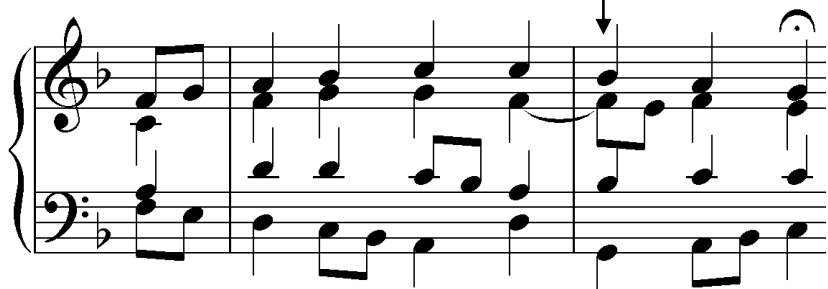


a) chords A:

a) Label the three chords in the box provided with Roman numerals.

b) Is the bass line better with the final E falling as here or would it be better if it rose to the E. Why?

**Example 2 (RM26, second phrase)**



c) What note of the chord is doubled here?

a) chord and embellishment:

b) chords F:

- Look at the first chord of the last bar. What sort of embellishment is this and what chord in E major does it decorate.
- Label the last three chords using Roman numerals
- What note of the chord is doubled at the beginning of the last bar?

**Exercises**

1



2



3



4

