

Worksheet Sixteen (Fingerprint 9)

Label the three bracketed chords in Examples 1-4 and then answer the questions down the side.

Example 1 (RM3, first phrase)

What chord appears in the middle of all the bracketed progressions in Examples 1-4?

What chord appears (in different inversions) either side of this middle chord in each case?

chords a: _____

Describe the relationship between soprano and bass in Example 1:

What problem would you create if you turned this chord progression backwards (i.e. the bass descended)?

Example 2 (RM40, fourth phrase)

chords C: _____

In the examples above, what note is doubled in the chord labelled A:

In the examples above, what note is doubled in the chord labelled B:

Example 3 (RM140, second phrase)

A musical score for a piano piece, Example 3 (RM140, second phrase). It consists of two staves: a treble clef staff and a bass clef staff. The treble staff contains a sequence of chords: G major (G-B-D), G major (G-B-D), G major (G-B-D), G major (G-B-D), G major (G-B-D), G major (G-B-D), and G major (G-B-D). The bass staff contains a sequence of notes: G, G, G, G, G, G, and G. An arrow points from the text box on the right to the first G chord in the treble staff.

What note of the chord is doubled here?

Why is the doubling different compared to the other 'B' chords?

chords G:

Example 5 (RM135, first phrase)

A musical score for a piano piece, Example 5 (RM135, first phrase). It consists of two staves: a treble clef staff and a bass clef staff. The treble staff contains a sequence of chords: D major (D-F-A), D major (D-F-A), D major (D-F-A), D major (D-F-A), D major (D-F-A), D major (D-F-A), and D major (D-F-A). The bass staff contains a sequence of notes: D, D, D, D, D, D, and D. A bracket is placed over the first four chords in the treble staff.

chords D:

This progression is a little different to the previous examples. In which Fingerprint have we encountered this exact chord sequence before?

What is different about it here?

Exercises

1



2



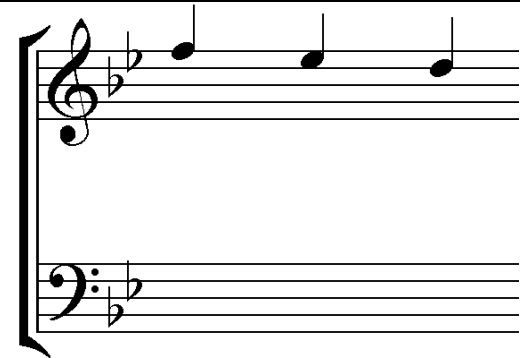
3



4



5



Note: Be careful with the fourth exercise – you cannot use any of the models exactly but will need to adapt one of them.