

Worksheet Fourteen (Fingerprint 4)

Examples from Bach Chorales

Example 1 (RM69, second phrase, slightly simplified)

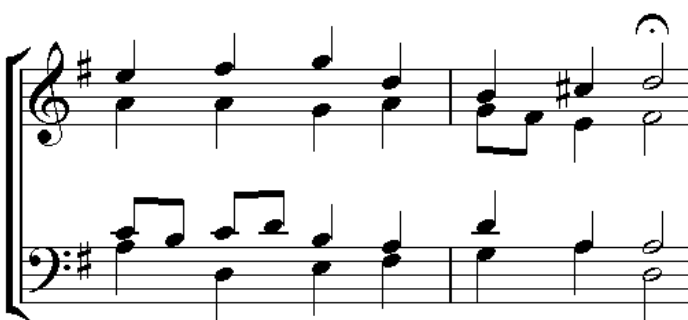


b) note doubled:

a) chords D:

- Label the three chords in the box provided with Roman numerals.
- What note of the chord is doubled in the penultimate chord?

Example 2 (RM18, second phrase)



a) chords D:

b) Why might this be more suitable at the end of a chorale than Example 1?

Exercises

1



2



3

