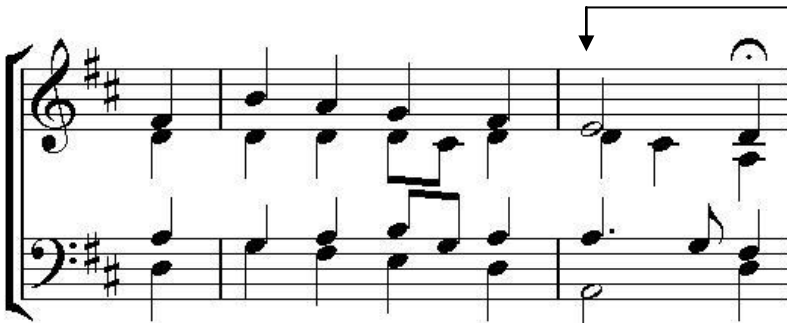


Worksheet Six (Fingerprint 2)

Examples from Bach Chorales

Example 1 (RM86, third phrase)



a) chords D:

b) harmonic feature:

- a) Label the last four chords in the box provided with Roman numerals.
- b) Precisely describe the chord and harmonic feature in the antepenultimate chord?

Example 2 (RM9, final phrase, slightly simplified)

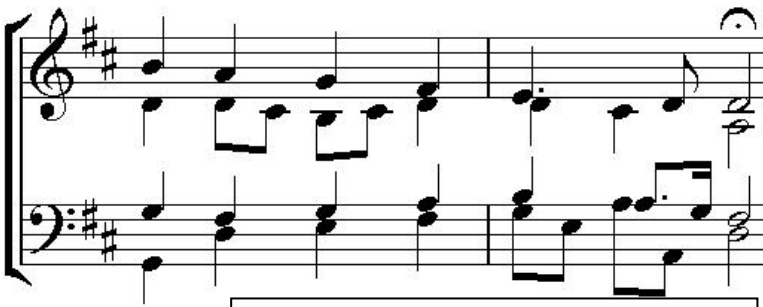


a) chords G:

b) harmonic feature:

- a) Label the last four chords in the box provided with Roman numerals.
- b) Precisely describe the chord and harmonic feature in the antepenultimate chord?

Example 3 (RM153, final phrase)



a) chords D:

b) What type of melodic decoration is in the soprano

c) What does Bach do to the passing seventh in the tenor part on the penultimate chord and why?

d) A more usual bass line would move in crotchets at the beginning of the last bar. Imagine that the added A quaver down an octave in the penultimate beat were not present – what voice-leading problem would there be?

Example 4 (RM240, final phrase)



Answer the questions below but bear in mind that this is a more unusual example in a number of ways.

a) chords C:

a) Label the last four chords in the box provided

b) In what way is the soprano pattern different at the cadence?

c) What is missing between the last two chords compared to the other examples and why is it not possible here?

Exercises

1

Musical exercise 1: Treble clef, key signature of one flat (Bb), two measures. The first measure contains a quarter note G4 and a quarter note F4. The second measure contains a quarter note E4 and a quarter note D4, with a fermata over the D4.

2

Musical exercise 2: Treble clef, key signature of one flat (Bb), two measures. The first measure contains a quarter note G4 and a quarter note F4. The second measure contains a quarter note E4 and a quarter note D4, with a fermata over the D4.

3

Musical exercise 3: Treble clef, key signature of two flats (Bb, Eb), two measures. The first measure contains a quarter note G4, a quarter note F4, and a quarter note E4. The second measure contains a quarter note D4 and a quarter note C4, with a fermata over the C4.

4

Musical exercise 4: Treble clef, key signature of one flat (Bb), two measures. The first measure contains a quarter note G4 and a quarter note F4. The second measure contains a quarter note E4, a quarter note D4, and a quarter note C4, with a fermata over the C4.

5

Musical exercise 5: Treble clef, key signature of one flat (Bb), two measures. The first measure contains a quarter note G4 and a quarter note F4. The second measure contains a quarter note E4 and a quarter note D4, with a fermata over the D4.

6

Musical exercise 6: Treble clef, key signature of two sharps (F#, C#), two measures. The first measure contains a quarter note G4, a quarter note A4, and a quarter note B4. The second measure contains a quarter note C5 and a quarter note B4, with a fermata over the B4.