

Worksheet Two

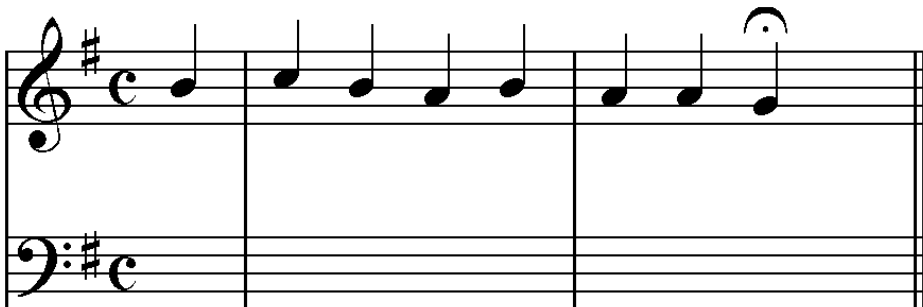
Step 1 (write in bass notes with Roman numerals for cadences)

| No. | Cadence key | Scale degrees | Cadence |
|-----|-------------|---------------|---------|
| 1 | | | |

[CHECK 1 – play melody with cadence]

Step 2 (put in primary chord roots with Roman numerals)

| Chord | Root | Third | Fifth |
|-------|------|-------|-------|
| I | | | |
| IV | | | |
| V | | | |



Musical notation showing a melody in G major (one sharp) and common time (C). The melody consists of the notes G, A, B, C, B, A, G. The bass line is empty for completion.

Name: _____

Step 3

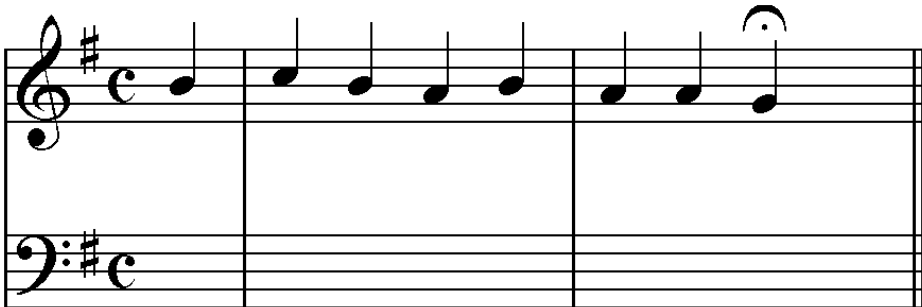
Refine bass line (look at Step 3b on method page of ChoraleGUIDE). For this exercise **use primary chords only** (you can use chord ii7B on the first chord of the last bar).

CHECK 2 – check for parallels between Soprano and Bass

Step 4

Add inner parts (look at Step 4 on method page)

CHECK 3 – Double SLAP



The mark scheme on page 15 of the A2 course handbook will help you interpret the mark you are given and the comments made above and below.

| | |
|--------------------------------------|------|
| Chords and voiceleading mark | / 16 |
| Comments on chords and voice leading | |
| Bass line | |
| Part writing | |